

All Saints Avenue

Maidenhead • Berkshire • SL6 6ET

Guide Price: £390,000



coopers
est 1986

All Saints Avenue

Maidenhead • Berkshire • SL6 6ET

A two bedroom terraced home, situated in Headingham Mews, just off the popular All Saints Avenue, offering convenient access to local amenities, transport links and nearby schools. The ground floor comprises a spacious living/dining room, a separate kitchen and a useful storage cupboard. To the first floor, there are two well proportioned bedrooms, a family bathroom and an additional storage cupboard completing the accommodation. Outside, there is a front lawn and an allocated parking space.

On completion, the property will benefit from new windows, a new kitchen, recessed lighting to the ground floor, and redecoration throughout.

No chain

Cul-de-sac

Desirable location

Open plan living & dining

Separate kitchen

Two double bedrooms

Family bathroom

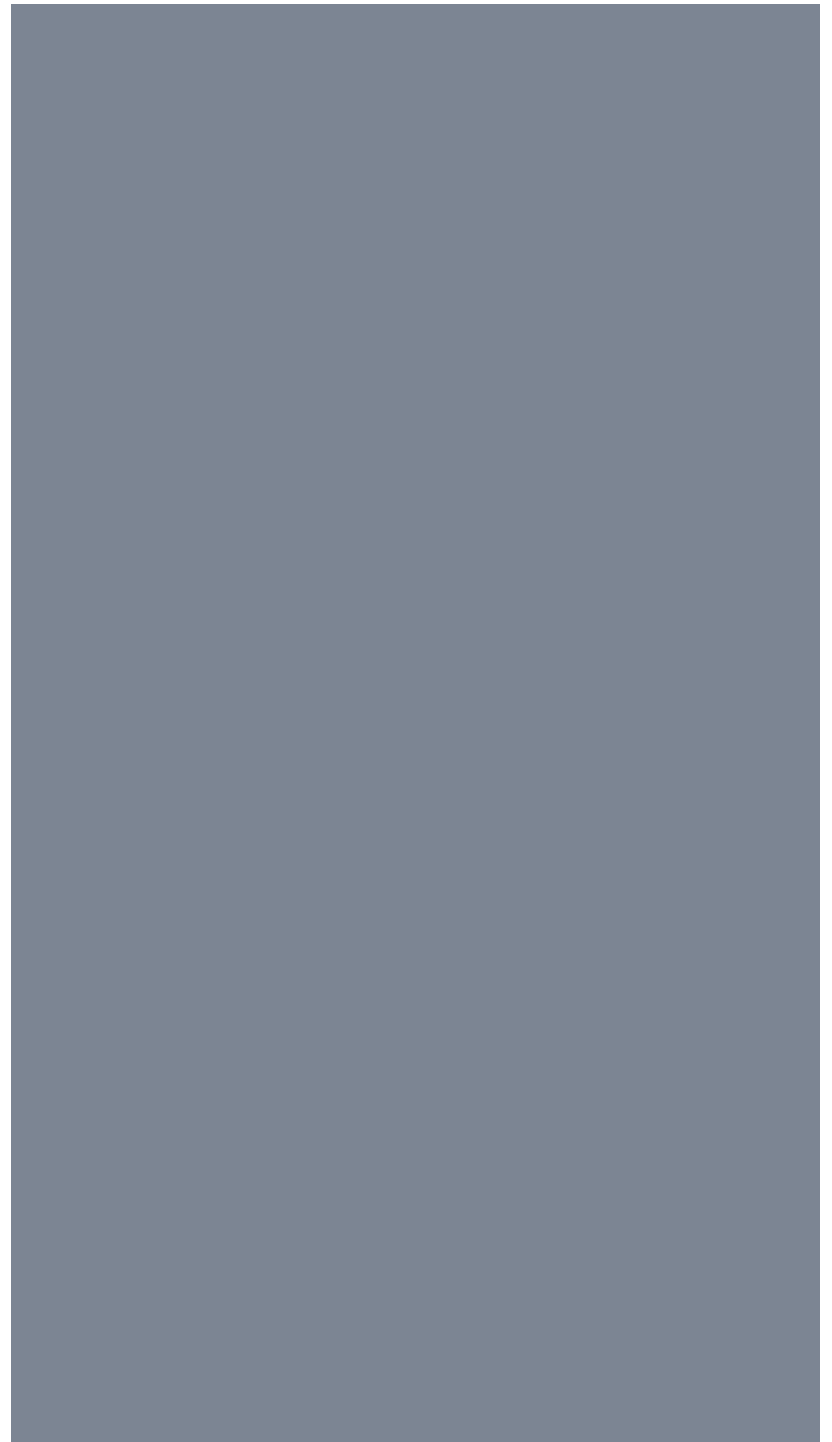
Allocated parking

Walking distance to local Elizabeth Line

Local amenities close by

These particulars are intended as a guide and must not be relied upon as statements of fact. Your attention is drawn to the Important Notice on the last page.







Schools:



Train:



Car:

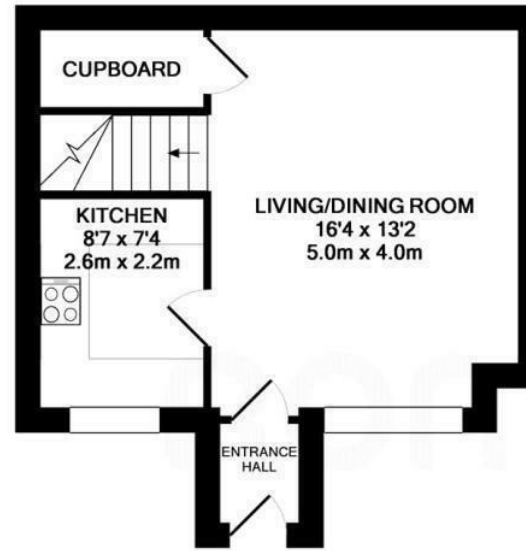
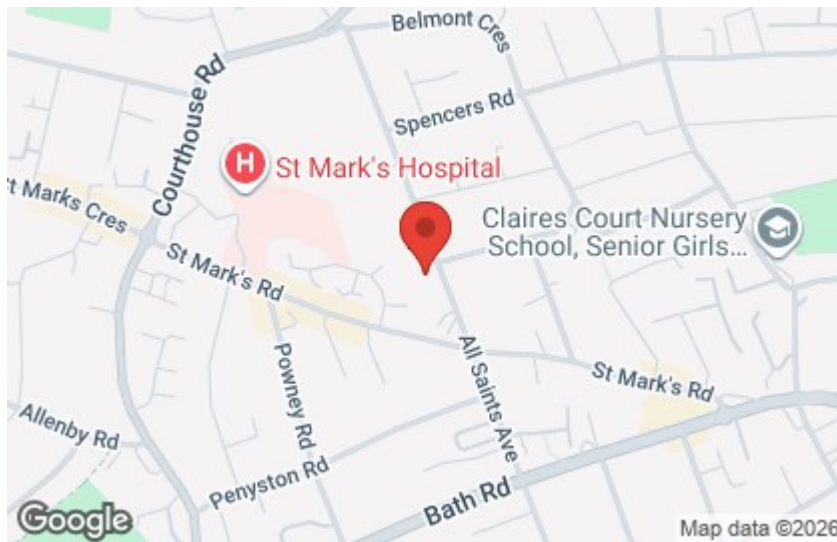
M4, A40, M25, M40



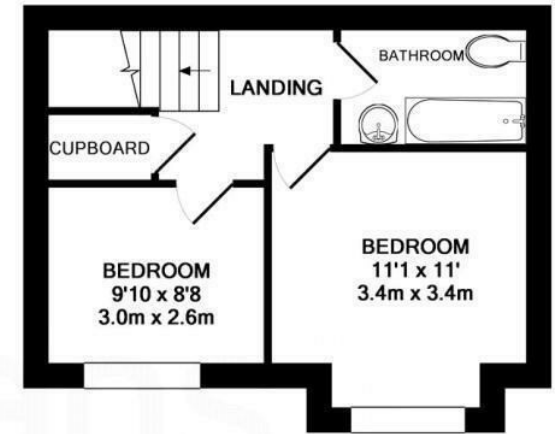
Council Tax Band:

D

(Distances are straight line measurements from centre of postcode)



GROUND FLOOR
APPROX. FLOOR
AREA 352 SQ.FT.
(32.7 SQ.M.)



1ST FLOOR
APPROX. FLOOR
AREA 311 SQ.FT.
(28.9 SQ.M.)

TOTAL APPROX. FLOOR AREA 662 SQ.FT. (61.5 SQ.M.)

Whilst every attempt has been made to ensure the accuracy of the floor plan contained here, measurements of doors, windows, rooms and any other items are approximate and no responsibility is taken for any error, omission, or mis-statement. This plan is for illustrative purposes only and should be used as such by any prospective purchaser. The services, systems and appliances shown have not been tested and no guarantee as to their operability or efficiency can be given
Made with Metropix ©2018

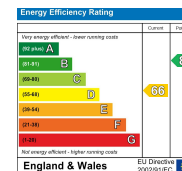
01628 232 550

42 Queen Street, Maidenhead,
, SL6 1HZ

maidenhead@coopersresidential.co.uk

CoopersResidential.co.uk

coopers
est 1986



Important Notice: These particulars, whilst believed to be accurate are set out as a general outline only for guidance and do not constitute any part of an offer or contract. Intending purchasers should not rely on them as statements or representation of fact, but must satisfy themselves by inspection or otherwise has the authority to make or give any representation or warranty in respect of the property.